

Carestream

DRX-Compass Family



Efficiency. Expandability. Ease of use.

Navigate New Directions in Performance and Flexibility.



SMART IMAGING SOLUTIONS

Versatility Meets Value.

Staying on course to the future of imaging can be difficult. Many facilities today, and possibly yours, would like to step up to the benefits of a full X-ray suite with advanced features. And naturally, you want the versatility, functionality and quality that you can rely on through the years and growth of your facility. But perhaps you've been waiting for a clear direction on which path to choose.

It's here. Just as a compass always points north, the CARESTREAM DRX-Compass X-ray System points the way to a successful future. It has just the right selection of features and options to streamline your workflow now, and it provides a clear and efficient expansion pathway for the future.

Whatever your needs, the DRX-Compass will keep you on the right road to superb performance with a solution that will grow along with you.

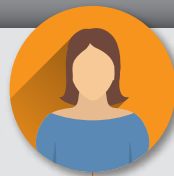


Advantages at a Glance

- Exceptional image quality to support accurate diagnoses
- Scalable and upgradeable technology to help eliminate obsolescence
- Wide selection of components to configure the ideal system for your needs
- Advanced Smart Features to automate tasks and workflow steps that streamline processes, support radiographer productivity, save time and enhance patient care



Everybody benefits from the DRX-Compass.



Patient

- DR technology aids in quicker diagnosis.



Radiographer

- The system is easy to use.
- Choose optional features to improve and enhance workflow.



Rad Admin.

- This fully featured X-ray room is yours at a practical price for true ROI.
- Choose the right receptor to meet your facility's needs today – DR, CR or even film.
- The system is scalable and upgradeable so that you can use CR or film today, and DR in the future, just by upgrading your software and detector.
- CARESTREAM ImageView Software provides you with improved cybersecurity.



Radiologist

- Exceptional image quality supports accurate diagnosis.
- Configure the system to meet your facility's needs.



Physicist/ Bio Engin.

- SmartGrid image processing supports pristine image quality without the use of a traditional grid.

Navigate the All-New DRX-Compass Family X-ray System.

Experience versatility, functionality and superb image quality.



Image Preview on the tubehead allows the radiographer to stay with their patients during exams.

Color-coded buttons on the tubehead handles match the colors on the overhead rails so the radiographer instantly knows which button controls which movement.

Functional Lighting allows the radiographer to know the system's status quickly and easily.

Optional Wallstand tilts -20/+90 degrees for easy patient positioning during cross-table exams.

Optional Auto-Centering optimizes ease of use and speeds workflow.

Optional Integrated Cameras for Smart Room capabilities.

Additional Features

- Swipe-n-Go Login** provides fast and secure access, no keyboard required.
- Common User Interface** for all Carestream DR products reduces training time and allows radiographers to move with ease between Carestream systems.

Optional Features

- Elevating Table** helps elderly, handicapped and pediatric patients, and makes patient transfer from stretcher to table easier.
- In-Bucky Charging** allows the detector to be ready at any time.
- Remote Control** improves workflow efficiency, allowing the radiographer to spend more time with patients.
- SmartGrid Image Processing** supports pristine image quality without the use of a traditional grid.
- Auto-Collimation** supports precise auto-positioning for ease of use and accelerated exam times.
- Auto-LLI** facilitates easy acquisition of long-length imaging.
- AI-based Smart Noise Cancellation** provides better image quality or lower radiation dose without the loss of image quality vs. our standard image processing.

Choose the best configuration for your facility and budget.

Maybe your facility's infrastructure or budget doesn't support an overhead tube.

No worries – the affordable DRX-Compass floor-mount tubehead has a small footprint and installation is a breeze – making it a great choice for your facility.



Functional Lighting allows the radiographer to know the system's status quickly and easily.

Optional vertical Auto-Tracking allows for easier positioning and improves workflow efficiency.

Telescoping Arm helps with easier patient positioning, which improves the patient experience.

Floor-mounted tubestand is designed to slide for faster workflow during exams.

Meet Our Family of DR Detectors.

Our broad portfolio includes wireless, sharable, high definition (HD) and glass-free models. Discover the right detector for your needs at carestream.com/detectors



The Power of Smart-Room Capabilities.

SMART IMAGING SOLUTIONS

Smart DR Workflow uses AI to streamline common tasks.

For busy departments with limited resources, our Smart Room* can help automate tasks for radiographers – enabling faster exams, enhanced patient throughput, greater productivity and improved patient care.

Meet the Power Behind Our Smart DR Workflow.

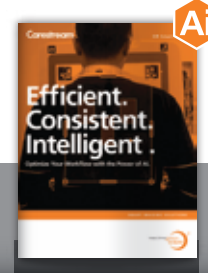
Eclipse is the engine behind our innovative imaging software. It uses AI technology and proprietary algorithms to significantly increase the value of the entire imaging chain, from capture to diagnosis.

Our Advanced Smart Features automate tasks and workflow steps to streamline processes, support radiographer productivity, save time and enhance patient care.



Eclipse: Harness the Power of Decades of Innovation.

Carestream's Eclipse is the engine behind our innovative imaging software. It uses AI technology and proprietary algorithms to significantly increase the value of the entire imaging chain, from capture to diagnosis.



[Download the DR Smart Room brochure](#) to see how AI can change your workflow.

Imaging Just Got a Whole Lot Smarter.



We are poised on the edge of a new era in Radiology. The application of Artificial Intelligence has already begun to add great value across the entire imaging chain.

Our Smart X-ray Rooms offer improved features, for faster, more efficient exams and enhanced workflow. Automated patient positioning and exposure settings, along with an operator console with a live camera view, helps provide image consistency for improved diagnostic confidence and helps reduce retake rates.



Radiographers can monitor their patients from the operator console through a **live camera view**. The camera is equipped with wide-angle optics to enhance the field of view of the collimated area.

* Smart Room Features are available on certain DR Systems. Contact your local Carestream Representative for more information.

carestream.com/drx-compass



"Rx only"

© Carestream Health, Inc., 2023. CARESTREAM is a trademark of Carestream Health. CAT 2000 278 06/23

Carestream